



KONGKIAT®
FANCY & MELANGE YARN

Belcoro
THE BEST QUALITY YARN

WHITE TO WHITE

SPIDERW

SPIDERW-001C

97.5% 2.5%
cotton polyester

SPIDERW-002R

97.5% 2.5%
rayon polyester



www.kongkiat.com

SPIDERW001C 002R



SpiderW-001C

Spider yarn is a random streaky stripe fancy yarn. Kongkiat uses special technique to inject long stripe pattern onto the yarn. We use cotton as a base and inject polyester stripe to create SPIDER pattern.

The key benefit of this yarn is White to White. Customers can buy this raw white yarn. Then, they can knit and dye the fabric with any color.

Customer can decide to dye on polyester and bleached, cotton part. Or customer can dye both polyester and cotton parts. Polyester part is dyed with disperse dyestuff. Cotton part is dyed with reactive dyestuff.

Moreover, we recommend customer to knit feeder by feeder with other regular yarn for cost reduction. Or they can produce stripe fabric from fabric dye with this SPIDER yarn. (see more detail in the catalogue)

SpiderW-002R

Spider yarn is a random streaky stripe fancy yarn. Kongkiat uses special technique to inject long stripe pattern onto the yarn. We use rayon as a base and inject polyester stripe to create SPIDER pattern.

The key benefit of this yarn is White to White. Customers can buy this raw white yarn. Then, they can knit and dye the fabric with any color.

Customer can decide to dye on polyester and bleached, cotton part. Or customer can dye both polyester and cotton parts. Polyester part is dyed with disperse dyestuff. Cotton part is dyed with reactive dyestuff.

Moreover, we recommend customer to knit feeder by feeder with other regular yarn for cost reduction. Or they can produce stripe fabric from fabric dye with this SPIDER yarn. (see more detail in the catalogue)

SPIDERWOO1C

97.5% Cotton

2.5% Polyester



KONGKIAT
TOP-DYED MELANGE YARN
FOR KNITTING & WEAVING

OFFICE : 259/1 Moo 6, Soi Ratburana 44, Ratburana Road, Bangkok 10140, Thailand
Tel : (662) 463-0020-1, 816-6960 Fax : (662) 463-1914, 461-1527
FACTORY : 19/9 Moo 3, Thumhol Bua-Lay, Amphur Nong-Kae, Saraburi 18230, Thailand
Tel : 036-726-046, 036-726-047, 036-726-048 Fax : 036-726-045
E-mail : sales@kongkiat.com
<http://www.kongkiat.com>

CODE : 30/1 SPIDERW-001C
WEIGHT FABRIC 120-130 g/m²
WIDTH : 72-74 INCHES
COMPOSITION 97.5% COTTON + 2.5% POLYESTER

ONE PART DYED (DISPERSE + BLEACH)

30/1 SPIDERW-001C

97.5% COTTON + 2.5% POLYESTER

DISPERSE : BLACK

S000G 993503: KK4788

SPIDERWOOD1C

97.5% Cotton

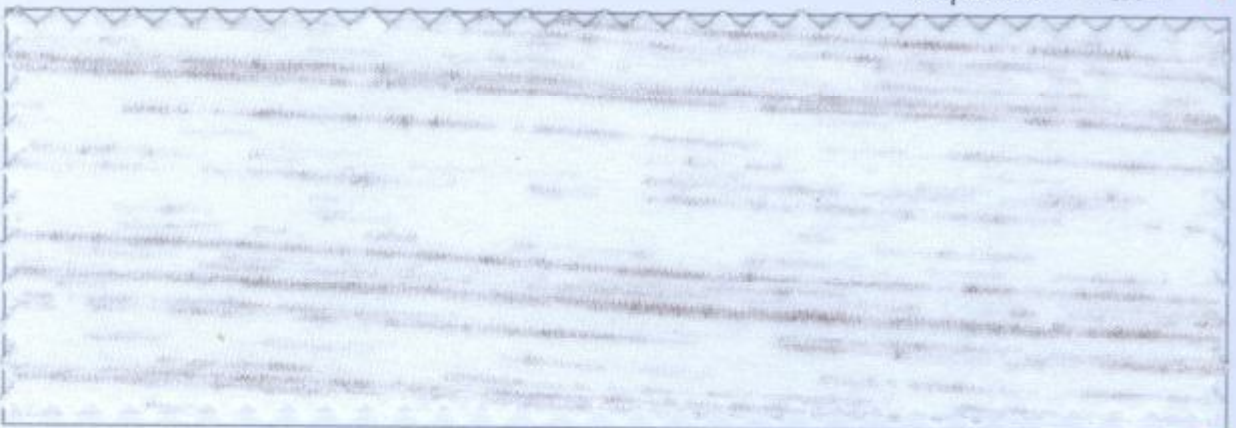
2.5% Polyester

RAW WHITE



kk-4788

S000G 993503 : Disperse : **Black**



kk-4782

S000G 993502 : Disperse : **Brown**



kk-4791

S000G 993501 : Disperse : **Copper**



kk-4769

S000G 993500 : Disperse : **Pink**

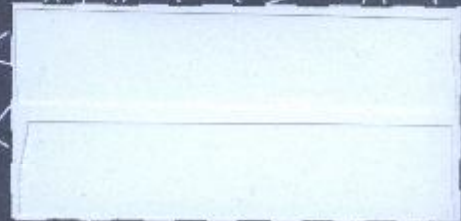
ONE PART DYED (DISPERSE + BLEACH)

3

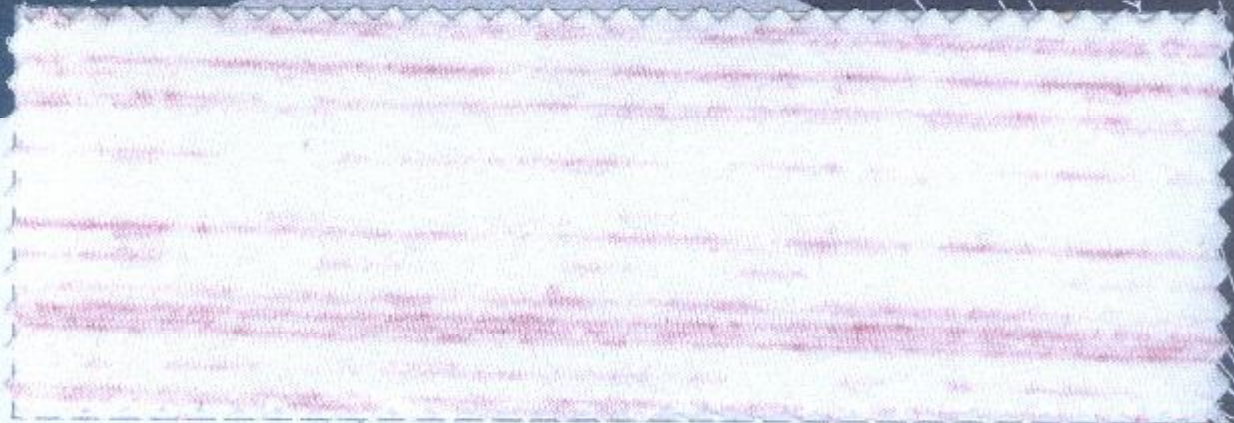
SPIDERWOOD1C

97.5% Cotton

2.5% Polyester

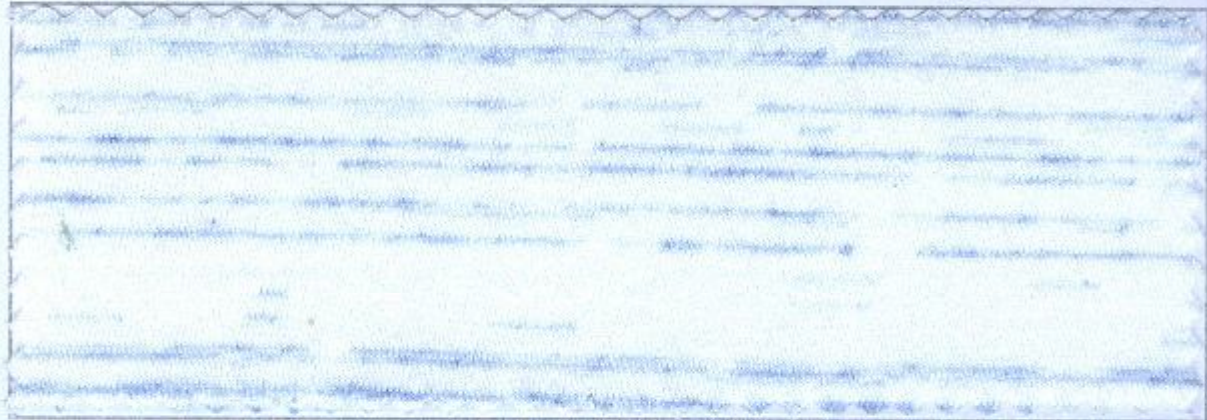


RAW WHITE



kk-4772

S000G 993499 : Disperse : Plum



kk-4774

S000G 993498 : Disperse : Navy



kk-4921

S000G 993455 : Disperse : Blue



kk-4792

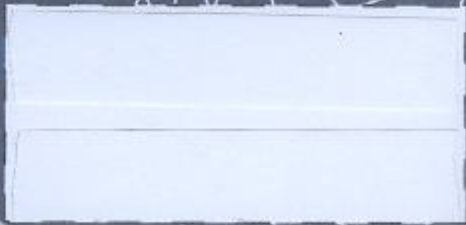
S000G 993497 : Disperse : Turquoise

4 ONE PART DYED (DISPERSE + BLEACH)

SPIDERWOODIC

97.5% Cotton

2.5% Polyester



RAW WHITE



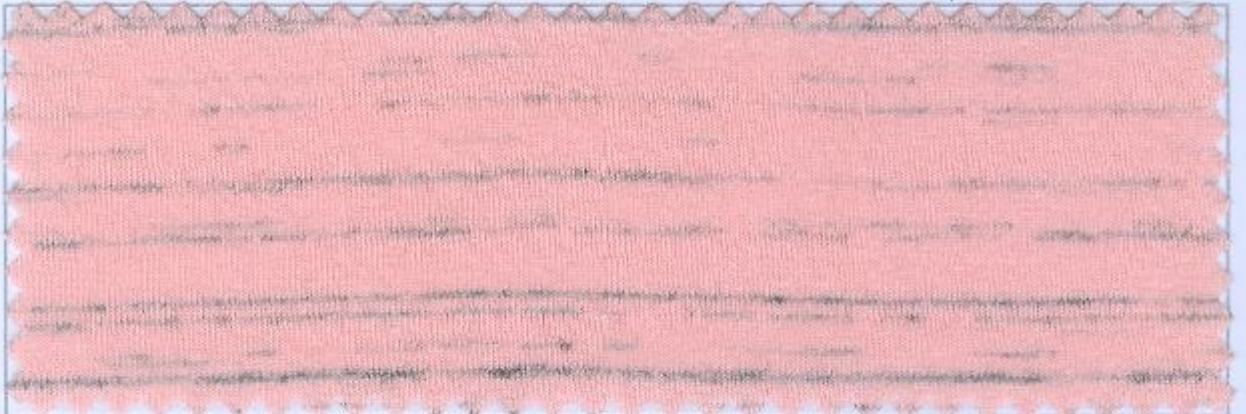
kk-4787

S000G 993496 : Reactive : Ling Grey
Disperse : Black



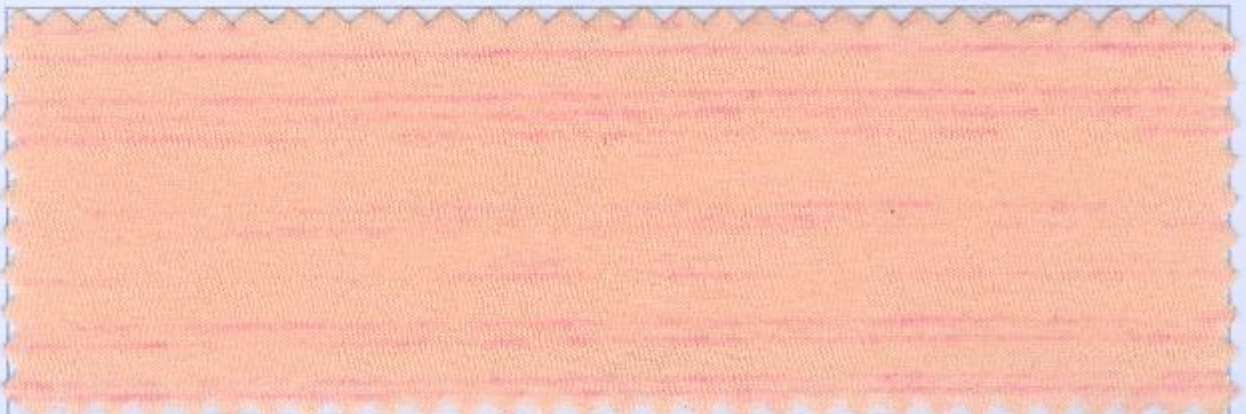
kk-4923

S000G 993454 : Reactive : Red
Disperse : Black



kk-4777

S000G 993495 : Reactive : Light Pink
Disperse : Black



kk-4785

S000G 993494 : Reactive : Light Orange
Disperse : Magenta

51 TWO PARTS DYED (REACTIVE & DISPERSE)

SPIDERWOODIC

97.5% Cotton

2.5% Polyester



RAW WHITE



kk-4786

S000G 993493 : Reactive : Yellow
Disperse : Navy



kk-4783

S000G 993492 : Reactive : Green
Disperse : Light Green



kk-4925

S000G 993453 : Reactive : Slate Grey
Disperse : Black



kk-4784

S000G 993491 : Reactive : Blue
Disperse : Navy

TWO PARTS DYED (REACTIVE & DISPERSE)



SPIDERWOODIC

97.5% Cotton

2.5% Polyester



RAW WHITE

1X0

(30SPIDERW-001C : 100%)

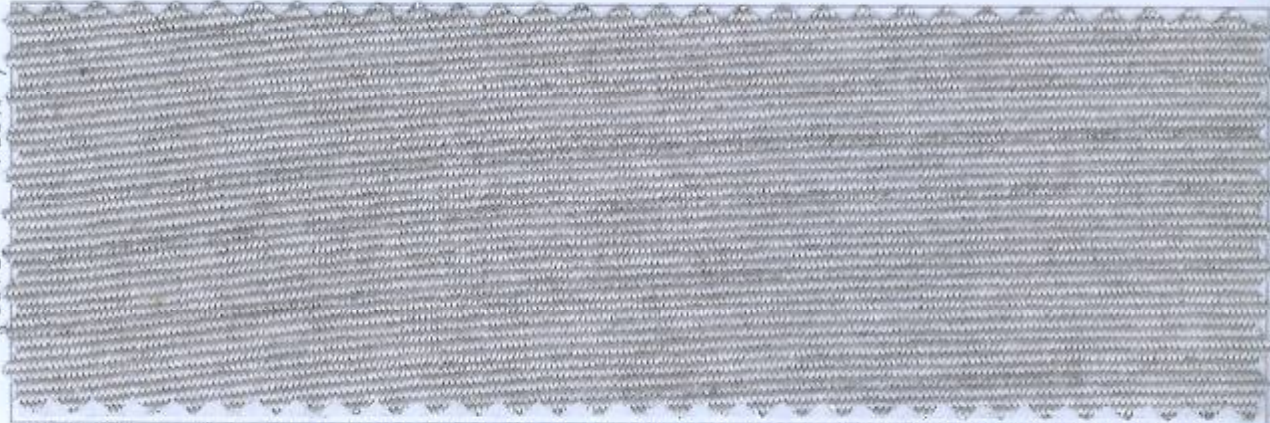


kk-4788

S000G 993503 // Black

1X1

(30SPIDERW-001C : 50%)
(30TC : 50%)

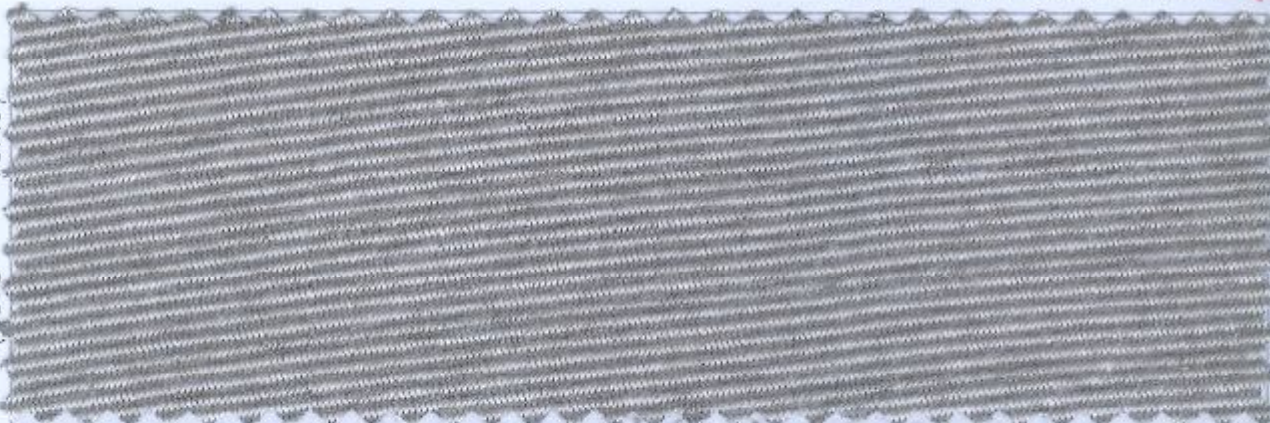


kk-4788

S001H 993490 // Black

1X2

(30SPIDERW-001C : 33%)
(30TC : 67%)



kk-4788

S002I 993489 // Black

1X3

(30SPIDERW-001C : 25%)
(30TC : 75%)



kk-4788

S003J 993488 // Black

KNIT WITH REGULAR 34/1 TC (65% Polyester + 35% Cotton)

SPIDERWOO1C

97.5% Cotton

2.5% Polyester

Stripe



30 SPIDERW-001C
: 35 FEED

34/1 TK : 35 FEED

32/1 SC : 15 FEED

34/1 TK : 15 FEED

S258M 993420
KK4934



30 SPIDERW-001C
: 50 FEED

34/1 TC
: 50 FEED

S035M 993419
KK4928
PURPLE

SPIDERW002R

97.5% Rayon

2.5% Polyester



KONGKIAT
TOP-DYED MELANGE YARN
FOR KNITTING & WEAVING

OFFICE :

259/1 Moo 6, Soi Ratburana 44, Ratburana Road, Bangkok 10140, Thailand.
Tel : (662) 463-0820-1, 816-6960 Fax : (662) 463-1914, 464-1577

FACTORY :

19/9 Moo 3, Thumhol Bua-Loy, Amphur Nong-Kae, Saraburi 18230, Thailand.
Tel : 036-726-046, 036-726-047, 036-726-048 Fax : 036-726-045

E-mail : sales@kongkiat.com
<http://www.kongkiat.com>

CODE : 30/1 SPIDERW-002R

WEIGHT FABRIC 120-130 g / m²

WIDTH : 72-74 INCHES

COMPOSITION 98% RAYON + 3% POLYESTER

ONE PART DYED (DISPERSE + BLEACH)

30/1 SPIDERW-002R

97.5% RAYON + 2.5% POLYESTER

DISPERSE : BLACK

S000G 993457: KK4788

SPIDERWOOD2R

97.5% Rayon

2.5% Polyester



KONGKIAT

TOP-DYED MELANGE YARN
FOR KNITTING & WEAVING

OFFICE:

159/1 Moo 6, Soi Ratburana 44, Ratburana Road, Bangkok 10140, Thailand.
Tel: (662) 463-0020-1, 816-6966 Fax: (662) 463-1914, 454-1527

FACTORY:

19/9 Moo 3, Thumboi Sue Loy, Amphur Nong-Kae, Saraburi 18230, Thailand.
Tel: 036-726-046, 036-726-047, 036-726-048 Fax: 036-726-045
E-mail: sales@kongkiat.com
<http://www.kongkiat.com>

CODE: 30/1 SPIDERW-002R

WEIGHT FABRIC 120-130 g/m²

WIDTH 72-74 INCHES

COMPOSITION 97.5% RAYON + 2.5% POLYESTER

TWO PART DYED (REACTIVE + DISPERSE)

30/1 SPIDERW-002R

97.5% RAYON + 2.5% POLYESTER

REACTIVE : BLUE

DISPERSE : NAVY

S000G 993456: KK4784

SPIDERW



KONGKIAT TEXTILE CO.,LTD.
23, Soi Ratburana 44 Ratburana Road
Bangkok 10140, Thailand

Tel : +(662) 463-0020-1

+(662) 816-6960

Fax : +(662) 463-1914

+(662) 464-1527

www.kongkiat.com

sales@kongkiat.com

skype : kongkiat.com